



# Ennismore Gardens, South Kensington

*London*

OLIVER BERNARD

LONDON

£1,495 per week



# The Property

ENNISMORE GARDENS, SOUTH KENSINGTON, LONDON, SW7

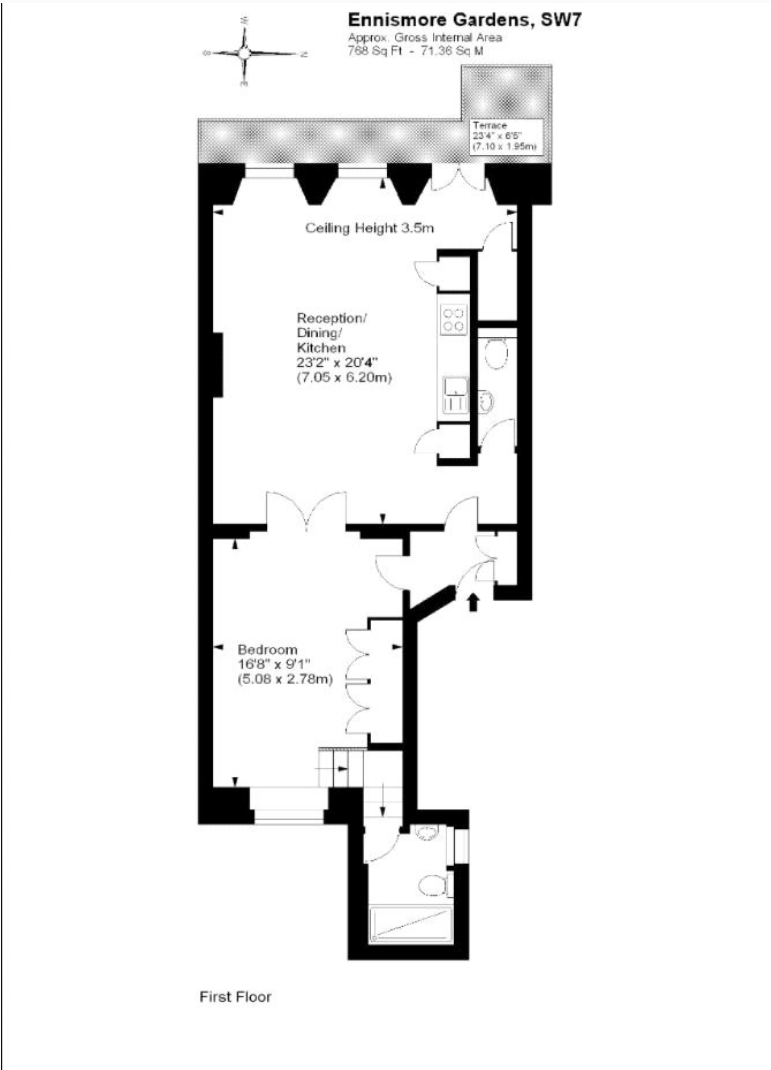
A Magnificently proportioned 1 bedroom flat set in a beautiful period building in a fantastic area, boasting high ceilings throughout this flat speaks volumes with a private balcony and ample storage space throughout.

## THE DETAILS

- Long Let
- 1 Total Bedroom
- 1 Reception Room
- 2 Bathrooms
- Flat/Apartment
  - Terraced
  - First Floor
  - Patio
  - Balcony
- Period (Pre 1945)
- Modern (Post 1945)
- Resident Parking
  - Town/City
  - Furnished
  - Unfurnished
- 782 Approx Sq Ft

OLIVER BERNARD





i

Not to scale, for guidance only and must not be relied upon as a statement of fact. All measurements and areas are approximate only and have been prepared in accordance with the current edition of the RICS Code of Measuring Practice.

**Important Information**

Our property particulars do not represent an offer or contract, or part of one. The information given is without responsibility on the part of the agents, seller(s) or lessor(s) and you should not rely on the information as being factually accurate about the property, its condition or its value. Neither OB Private nor any-one in its employment or acting on its behalf has authority to make any representation or warranty in relation to this property. We have not carried out a detailed survey, nor tested the services, appliances or fittings at the property. The images shown may only represent part of the property and are as they appeared at the time of being photographed. The areas, measurements and distances are approximate only. Any reference to alterations or use does not mean that any necessary planning permission, building regulation or other consent has been obtained. The VAT position relating to the property may change without notice.



Energy Efficiency Rating		
	Current	Potential
Very energy efficient - lower running costs		
(92+) <b>A</b>		
(81-91) <b>B</b>		
(69-80) <b>C</b>		
(55-68) <b>D</b>		
(39-54) <b>E</b>		
(21-38) <b>F</b>		
(1-20) <b>G</b>		
Not energy efficient - higher running costs		
England, Scotland & Wales		EU Directive 2002/91/EC





# Contact

George Vernon

OLIVER BERNARD PRIVATE MAYFAIR

3RD FLOOR FRONT  
33 BRUTON STREET  
LONDON

W1J 6QU INFO@OBPRIVATE.CO.UK 02071180747

||<https://www.obpri>

