



North Audley, Mayfair

London

OLIVER BERNARD

LONDON

£8,000 per week



The Property

NORTH AUDLEY, MAYFAIR, LONDON, W1K

Formerly the vicarage, this attractive Netherlandish, gabled building was designed by Sir Arthur Blomfield in 1887. North Audley Street is an exclusive area of Mayfair, close to Grosvenor Square and Selfridges department store. The apartment is set over two floors, on the ground floor you have an opulent open plan kitchen and living room leading to a snug overlooking the garden. Upstairs on the first floor you've a 30ft drawing room with 3 meter ceiling height complete with a balcony overlooking Green Street, a master bedroom with a separate walk in wardrobe and ensuite bathroom, then two further bedrooms, one double and one twin.

THE DETAILS

- Long Let
- Minimum term 12 months
 - 3 Total Bedrooms
 - 2 Reception Rooms
 - 4 Bathrooms
 - Flat/Apartment
 - Duplex
 - Garden
 - Patio
 - Balcony
 - Resident Parking
 - Furnished
 - 2826 Approx Sq Ft



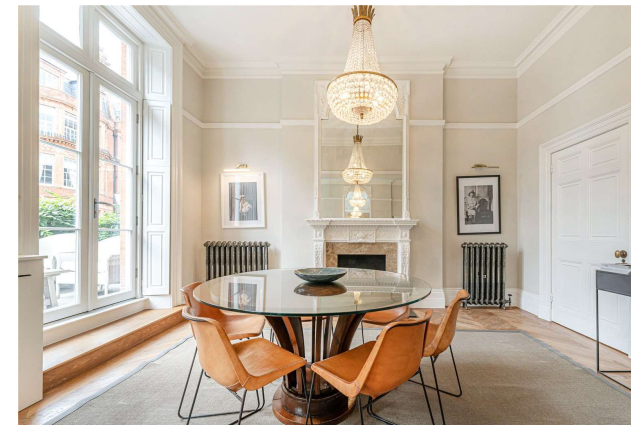
North Audley Street
 Approx. Gross Internal Area 2826 Sq Ft - 262.54 Sq M
 (Excluding Void)



For Illustration Purposes Only - Not To Scale

This floor plan should be used as a general outline for guidance only and does not constitute in whole or in part an offer or contract. Any intending purchaser or lessee should satisfy themselves by inspection, searches, enquiries and full survey as to the correctness of each statement. Any areas, measurements or distances quoted are approximate and should not be used to value a property or be the basis of any sale or let. Copyright Morriarti Photography & Design LTD

Energy Efficiency Rating		Current	Potential
Very energy efficient - lower running costs			
(92-)	A		
(81-91)	B		
(69-80)	C		
(55-68)	D		
(39-54)	E		
(21-38)	F		
(1-20)	G		
Mid energy efficient - higher running costs			
England, Scotland & Wales		56	71
EU Directive 2002/91/EC			



①

Not to scale, for guidance only and must not be relied upon as a statement of fact. All measurements and areas are approximate only and have been prepared in accordance with the current edition of the RICS Code of Measuring Practice.

Important Information

Our property particulars do not represent an offer or contract, or part of one. The information given is without responsibility on the part of the agents, seller(s) or lessor(s) and you should not rely on the information as being factually accurate about the property, its condition or its value. Neither OB Private nor any-one in its employment or acting on its behalf has authority to make any representation or warranty in relation to this property. We have not carried out a detailed survey, nor tested the services, appliances or fittings at the property. The images shown may only represent part of the property and are as they appeared at the time of being photographed. The areas, measurements and distances are approximate only. Any reference to alterations or use does not mean that any necessary planning permission, building regulation or other consent has been obtained. The VAT position relating to the property may change without notice.



Contact

Charlie Gibson

OLIVER BERNARD PRIVATE MAYFAIR

12 HAY HILL
LONDON
W1J 8NR

INFO@OBPRIVATE.CO.UK

02071180747

